

COURT ACE SERIES - MEDIUM

High Lumen Medium LED Tennis Court Light



CENTER COURT
LIGHTING

SPECIFICATIONS

APPLICATION

The Court Ace (CTA) Series of high output LED luminaires are designed for new outdoor sports lighting applications and to be a replacement for HID sports area lights. They are optimal for lighting applications where long life, low maintenance, and consistent color rendering is required.

CONSTRUCTION

A compact, one-piece die cast housing. Saving costs versus models that are extruded or cast and require additional parts. The heat sink is included in the actual casting, further minimizing the need for additional parts. Standard Arm Mount features an integral arm, increasing strength and simplifying installation. Each fixture can accommodate an optional twist-lock photocontrol which allows for further energy savings and an optional PIR motion sensor allows for security. The high lumen output allows the fixture to be used for general area or tennis lighting applications. CTA-M optics are Full Cutoff design. The

new CTA-M LED Tennis Court Light delivers maximum value by providing significant energy savings, long life and outstanding photometric performance at an affordable price. The CTA-M delivers 20,000 to 39,000 lumens allowing it to replace up to 1000W HID luminaires.

OPTICAL SYSTEM

Made with a state of the art UV stabilized acrylic high performance refractive optical assemblies that use high transmissivity materials to achieve precise photometric distributions.

ELECTRICAL SYSTEM

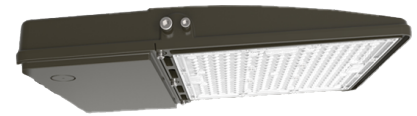
Available in up to a 39,000 nominal lumens in most optical distributions with either 4000K Neutral White or 5000K Cool White color temperatures. Universal input voltage 120-277Vac, 50/60Hz; 347/480Vac. Operating temperature range -40°C to 40° C.

MOUNTING

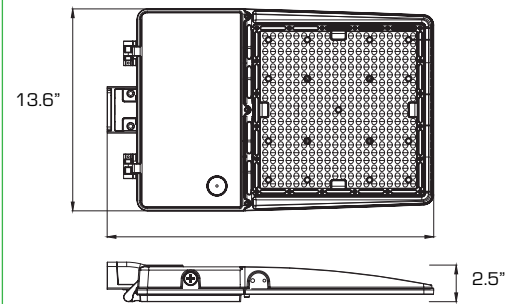
Available with several or multiple unique mountings, specifically designed to provide one-for-one, and in some cases two-for-one, solutions for replacing existing metal halide or high pressure sodium lighting. Features an integral universal mounting mechanism that allows the luminaire to be easily mounted on most existing drill hole patterns. This provides significant labor savings. An easy-access door on the bottom of mounting arm allows for wiring without opening the electrical compartment. A mast arm adaptor, adjustable integral slip fitter and other mounting configurations are available.

FINISH

Heavy-duty housing is constructed of cast aluminum is epoxy e-coated with corrosion resistant polyester powder coat finish. Standard colors available: Black, Bronze, US Green, White. Custom colors available upon request.



DIMENSIONS



ORDERING INFORMATION

EXAMPLE: CTA-M-C-39L-T4-1-GR-BTEC

CTA-M	C	39L	T4	1	GR	BTEC
SERIES	COLOR TEMP	NOMINAL LUMENS	OPTICS	VOLTAGE	FINISH	OPTIONS
	C = Cool White (5000K) N = Neutral White (4000K)	20L = 20,000 Lumens 24L = 24,000 Lumens 28L = 28,000 Lumens 31L = 31,000 Lumens 35L = 35,000 Lumens 39L = 39,000 Lumens	T3 = Type III T4 = Type IV T5 = Type V	1 = Multi-Volt* 2 = 347~480v (HV)	BK = Black BZ = Bronze GR = US Green WH = White SP = Special*	BTEC = Integrated Bluetooth Control Module Casambi Ready Mesh Network IMS = Fixture Mount Passive Infrared Motion Sensor (IMS Lenses Below, Ordered Separately) TLWSFSP-L3 = 360° lens, maximum coverage 40' diameter from 20' height (IMS) TLWSFSP-L7 = 360° lens, maximum coverage 100' diameter from 40' height (IMS) PCR7 = 7-Pin Twist-Lock Photocell receptacle ANSIC136.41 with Shorting Cap

ACCESSORIES (Order Separately)

- TLWSFSIR-100** Remote Handheld Sensor Configuration Tool for IMS
- PC2** 347-480V Twist-Lock Photocell
- PC7** Multi-Tap (105-285V) Twist Lock Photocell
- CTA SM** Slide Mount Adaptor
- CER100*** Wireless Repeater

ARMS (Order Separately)

CCS 7° TILT ARMS

- Single Straight Arm with 7° Up Tilt
CCS-190
EPA: 1.8 29 lbs.
- Double Straight Arm at 180° with 7° Up Tilt
CCS-2180
EPA: 3.4 49 lbs.
- Double Straight Arm at 70° with 7° Up Tilt
CCS-270
EPA: 2.8 49 lbs.
- Quad Straight Arm at 70° with 7° Up Tilt
CCS-470
- Quad Straight Arm at 90° with 7° Up Tilt
CCS-490
EPA: 3.75 89 lbs.

DAVIT ARMS

- Single Davit Arm
DV190
EPA: 0.9 51 lbs.
- Double Davit Arm at 180°
DV2180
EPA: 1.4 83 lbs.
- Double Davit Arm at 70°
DV270
EPA: 1.1 83 lbs.
- Quad Davit Arm at 70°
DV470
- Quad Davit Arm at 90°
DV490
EPA: 1.6 145 lbs.

NOTES

- 1 = Multi-Volt is an auto ranging power supply from 100V to 300V input.
- 2 = Custom RAL color matching is available. Contact your sales representative for additional info.
- 3 = Control Modules are installed and luminaires are commissioned at the factory. Lighting control system via the Casambi app for Apple iOS and Android devices provides diverse functionality for a control hierarchy capable of managing multiple schedules and scenes and incorporating a variety of energy saving accessories. *STGA7L (Wi-Fi ready tablet/Gateway Samsung Tab A7 Lite) is required as a gateway and can be purchased from a local retailer or online.
- 4 = For extended range greater than 150ft between BT Mesh Network connections.

*STGA7L = Enables remote access using the Gateway and Sites functionality in the Casambi App. Automatically restores network control settings and provides automatic time back up for the mesh network. This is required as a gateway and can be purchased from a local retailer or online.

Slide Mount Adaptor (CTA SM) must be used in conjunction with any of the arms above to properly mount CTA fixture.

COURT ACE SERIES - MEDIUM

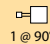
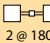
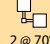


High Lumen Medium LED Tennis Court Light

LUMINAIRE CHARACTERISTICS

Nominal Lumens	Delivered Lumens and Wattage/Optic Type - 5000K Cool White								
	TYPE III			TYPE IV			TYPE V		
	Lumens	Wattage	Lm/W	Lumens	Wattage	Lm/W	Lumens	Wattage	Lm/W
20L	20,921	155W	135	20,544	155W	133	20,712	155W	134
24L	24,005	176W	136	23,573	176W	134	23,765	176W	135
28L	28,177	204W	138	27,670	204W	136	27,895	204W	137
31L	32,350	232W	139	31,768	232W	137	32,027	232W	138
35L	37,414	271W	138	36,741	271W	136	37,040	271W	137
39L	41,587	298W	140	40,838	298W	137	41,171	298W	138

Nominal Lumens	Delivered Lumens and Wattage/Optic Type - 4000K Neutral White								
	TYPE III			TYPE IV			TYPE V		
	Lumens	Wattage	Lm/W	Lumens	Wattage	Lm/W	Lumens	Wattage	Lm/W
20L	20,503	155W	132	20,134	155W	130	20,298	155W	131
24L	23,525	176W	134	23,101	176W	131	23,290	176W	132
28L	27,613	204W	135	27,116	204W	133	27,337	204W	134
31L	31,703	232W	137	31,132	232W	134	31,386	232W	135
35L	36,666	271W	135	36,006	271W	133	36,299	271W	134
39L	40,755	298W	137	40,022	298W	134	40,348	289W	135

System Wattage	L70 @ 25°C	Amperage Draw					
		120V	208V	240V	277V	347V	480V
155W	>50K Hrs.	1.3	0.7	0.6	0.6	0.4	0.3
176W	>50K Hrs.	1.5	0.8	0.7	0.6	0.5	0.4
204W	>50K Hrs.	1.7	1.0	0.9	0.7	0.6	0.4
232W	>50K Hrs.	1.9	1.1	1.0	0.8	0.7	0.5
271W	>50K Hrs.	2.3	1.3	1.1	1.0	0.8	0.6
298W	>50K Hrs.	2.5	1.4	1.2	1.1	0.9	0.6

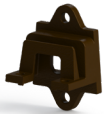
EPA's (Ft. ²)		
Fixture Configuration	CCS7 ARM ⁵	DAVIT ARM ⁵
 1 @ 90°	2.5	1.6
 2 @ 180°	4.8	2.8
 2 @ 70°	3.8	2.2
 3 @ 90°	5.5	3.4
 4 @ 90° or 4 @ 70°	6.0	3.9

⁵ = EPA's shown include both the fixture and the mounting apparatus.

COURT ACE SERIES - MEDIUM

High Lumen Medium LED Tennis Court Light

ACCESSORIES (Order Separately)



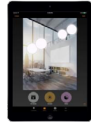
CTA SM
Slide Mount Adaptor
(Required to Mount to Arms)



BTEC³
Integrated Bluetooth
Control Module
Casambi Ready Mesh
Network



PCR7
7-Pin Twist-Lock Photocell
Receptacle ANSI C136.41 and
Receptacle Shorting Cap
(Factory Installed)



STGA7L
Wi-Fi Ready Tablet /
Gateway Samsung Tab
A7 Lite



PC7
Multi-Tap (105-285V) Twist-
Lock Photocell



CER100⁴
Wireless Repeater

PC2
480V Twist-Lock Photocell

FIXTURE MOUNT MOTION SENSOR (IMS)

APPLICATION — The sensor is ideal for areas such as parking facilities, gas stations, pedestrian pathways, and warehouses. A choice of four lenses ensures complete coverage for mounting heights up to 40'.

OPERATION — Typically, the sensor ramps lighting On to the selected High mode level when motion is detected and the ambient light level is below the hold off setpoint. After the sensor stops detecting movement and the time delay elapses, lights fade to the Low mode level. If there is no motion during the subsequent cut off time delay, the lights will turn Off. For dusk to dawn control, the integral photocell can switch the lights On and Off based on the ambient light level so that lighting remains on overnight even without motion detection.

FEATURES —

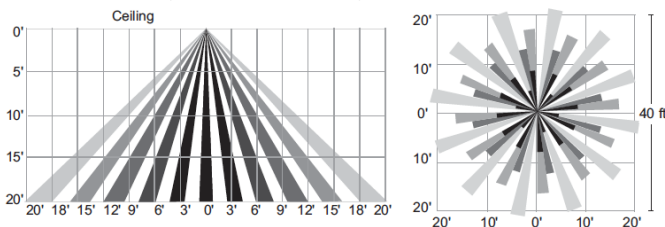
- Provides line voltage On/Off switching
- High and low modes fully adjustable from 0 to 10V
- Optional cut off delay
- Adjustable ramp up and fade down times
- Optional daylighting setpoints feature automatic calibration, or permit manual adjustment
- Polycarbonate construction; flame retardant, UV resistant, impact resistant, recyclable
- UL244A and UL508



MOTION SENSOR LENSES FIELD OF VIEW

TLWSFSP-L3

360° lens, maximum coverage 40' diameter from 20' height



TLWSFSP-L7

360° lens, maximum coverage 100' diameter from 40' height

